

## Why ventilate pitched roofs?

Ventilation is required in most pitch roof designs in new build and conversion to avoid potential damage due to condensation, to ventilate foul drainage systems and to provide fresh air to internal spaces.

Building Regulations Approved Document Part F1, Part F2 and BS 5250:2002 'Code of practice for control of condensation in buildings' requires adequate provision shall be made for the removal of water vapour from rooms and provision for the prevention of excessive condensation in a roof or in a roof void above an insulated ceiling.

This can be achieved by the inclusion of tile or slate ventilators placed within the roof area at high and low level (to take advantage of natural pressure differentials) and by linking the ventilators to a mechanical extract system (which may incorporate heat recovery) or a soil and vent system.

## Ubbink roof line tile and slate ventilators

Ubbink's roof line tile and slate ventilators can be used to comply with all statutory requirements in England & Wales, Scotland and Northern Ireland and relevant standards for ventilation of roof spaces.

In addition, as the roof line ventilators accurately match the profile and colour of the main roof covering they fit in seamlessly, so avoiding unsightly interruptions to the roof finish.



## UB11 Vepac slate ventilator

The UB11 Vepac vent is a roof line unit with a multi-purpose base which will provide inconspicuous ventilation in most sizes of natural and synthetic roofing slate.



UB11 is suitable for high/low level venting in roofs with pitches of 25° and over. Each vent has a slotted inhibitor to keep out large insects and vermin and requires a minimum of batten and slate trimming during installation.

By adding the UB39 service terminal this vent is suitable for terminating 110mm diameter mechanical extract systems and soil and vent systems where an external pressure test is not required.

## UB8 plain tile ventilator

The UB8 roof line vent is designed to provide inconspicuous ventilation alongside small, non-interlocking clay and concrete plain tiles.

UB8 is suitable for high/low level venting in roofs with minimum pitches of 35° (clay tiles) and 40° (concrete tiles). Each vent has a slotted inhibitor to keep out large insects and vermin and requires a minimum of batten and tile trimming during installation.



By adding the UB37 service terminal this vent is suitable for terminating 110mm diameter mechanical extract systems and soil and vent systems where an external pressure test is not required.

## UB62 profiled tile ventilators

The UB62 range of tile ventilators include profiles to suit most common styles of interlocking roof tiles.

The UB62 roof line vent offers high performance whilst retaining the aesthetics of the roof design.

All UB62 style ventilators are suitable for high or low level venting in roofs with pitches of 22.5° and over and can be used to supplement or replace other ventilation such as dry ridge, abutment or eaves systems. They are also suitable for ventilation of compartmental roof spaces, such as fire walls.

With the use of a stepped adaptor the UB62 can also be used for mechanical extraction or with soil pipes for the removal of foul air.



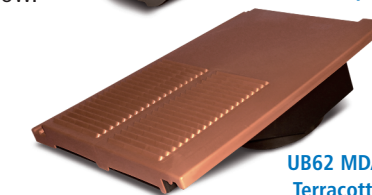
### UB62 selector

UB62 ventilators are suitable for use with a wide range of roof tile profiles including those listed below.



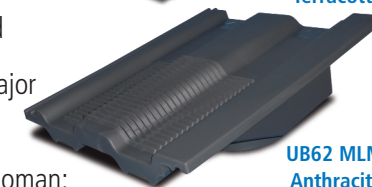
UB62 MEN Sepia

**MEN:** Marley Mendip;  
Redland Grovebury



UB62 MDA  
Terracotta

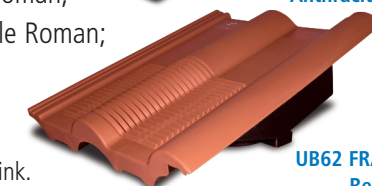
**MDA:** Marley Modern;  
Russell Grampian;  
Redland Mini Stoneworld



UB62 MLM  
Anthracite

**MLM:** Marley Ludlow Major

**FRA:** Marley Double  
Roman; Russell Double Roman;  
Redland Landmark Double Roman;  
Sandtoft Double Roman



UB62 FRA  
Red

For the complete list of all suitable profiles contact Ubbink.

**UB11 Vepack slate ventilator**

<b>Composition:</b>	UV stabilised high impact polystyrene and ABS
<b>Colours:</b>	Anthracite Special colour finishes available to order.
<b>Roof pitch:</b>	25° minimum
<b>Free vent area:</b>	10,750mm <sup>2</sup>

**UB8 plain tile ventilator**

<b>Composition:</b>	PVC-u
<b>Colours:</b>	Terracotta, red, sepia and anthracite Special colour finishes available to order
<b>Roof pitch:</b>	35° minimum with clay plain tiles* 40° minimum with concrete plain tiles and clay plain tiles which do not meet the requirements of BS EN 1304:2005*
*In accordance with the recommendations of BS 5534-1:1997	
<b>Free vent area:</b>	6,250mm <sup>2</sup>

**UB62 profiled tile ventilators**

<b>Composition:</b>	Polypropylene
<b>Colours:</b>	Terracotta, red, sepia and anthracite Special colour finishes available to order.
<b>Roof pitch:</b>	22.5° minimum
<b>Free vent area:</b>	15,000mm <sup>2</sup>

All Ubbink roof line ventilators are UV stable so their function will not diminish following continuous exposure. All our vents are quick to install, require no special tools or any special maintenance other than a regular inspection to check for any blockage of the ventilation grilles.

**IT WON'T COST THE EARTH**

Ubbink is committed to sustainability: not only are our products designed to provide solutions which are environmentally friendly and energy efficient, but we are focussed on reducing the environmental impact of every part of our business. We select our materials meticulously, employ energy efficient manufacturing processes and work to reduce waste and carbon emissions.

**THE UBBINK RANGE**

- Non-lead flashing • Eaves and ridge ventilation • Flat roof vents
- Tile and slate vents • Breather membranes • Non-permeable underlays
- Vapour control layers • Heat reflecting membranes • Flat roof windows
- Dry verge • Pitched and flat roof terminals • Whole house ventilation
- Heat recovery systems • Heating flue systems • Insulation trays
- Tubular skylights • Valley troughs • Loft hatches • Sealants



**Ubbink (UK) Ltd**

Borough Road, Brackley, Northants NN13 7TB

T: 0845 456 3499 • F: 01280 705 332

E: [info@ubbink.co.uk](mailto:info@ubbink.co.uk) • W: [www.ubbink.co.uk](http://www.ubbink.co.uk)

**For technical advice call 01280 700211**

Every effort has been taken in the preparation of this brochure to ensure the accuracy of representations contained herein. Recommendations as to the use of materials, construction details and methods of installation are given in good faith and relate to typical situations. However, every site has different characteristics and reliance should not be placed on the foregoing recommendations. Advice can be given as to specific applications of the products, upon request to Ubbink.



**ubbink BUILDING SOLUTIONS**

# Roof line slate & tile ventilators

**To suit a wide range  
of clay, concrete  
and slate profiles  
and colours**

